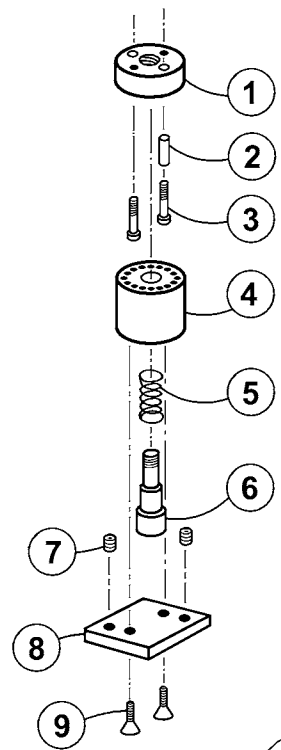




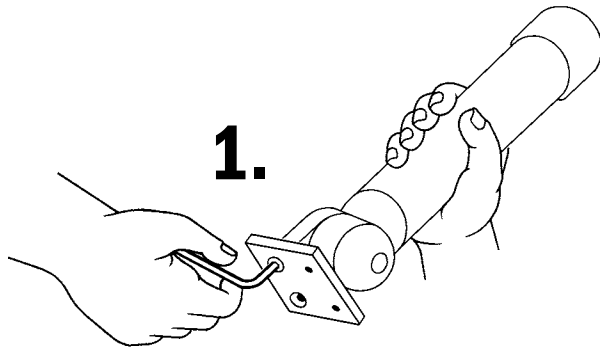
# Multi-Axis II Rod Holder Conversion Kit

## Parts List KT00357

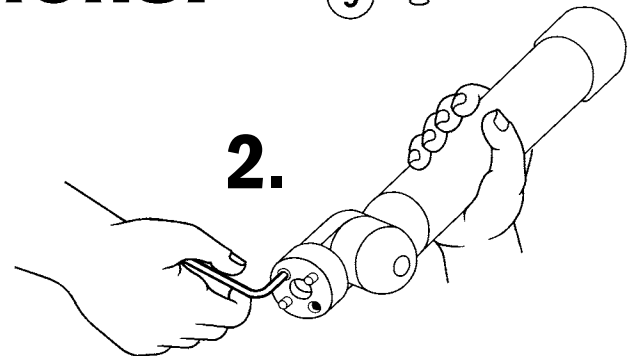
Detail No.	Description	Qty.	Order By Part No.
1	Multi-Axis II Base Upper Half	1	60024
2	Locator Pins	2	242166
3	1/4-20 x 3/4 in. SS SHC Screws	2	2002
4	Multi-Axis II Base Lower Half	1	60023
5	Spring	1	2600
6	1/2 x 3/8-16 x 1 in. SS Shoulder Bolt	1	2147
7	1/4-20 x 1/4 in. Set Screws	2	2261
8	Multi-Axis II Base Plate	1	60025
9	1/4-20 x 3/4 in. Fl Hd Cap Screws	2	2009



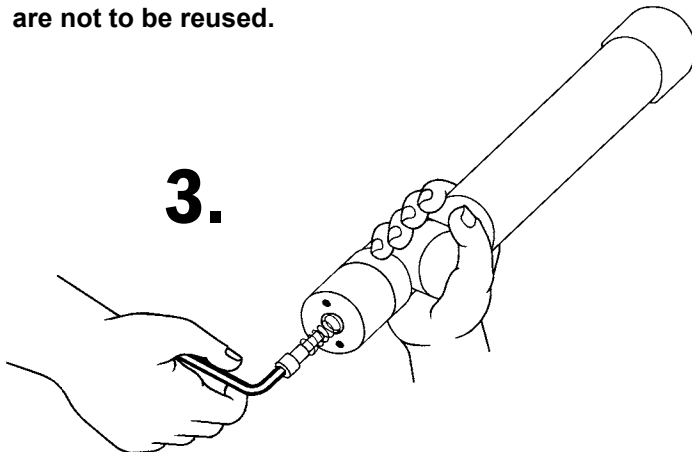
## Conversion Instructions:



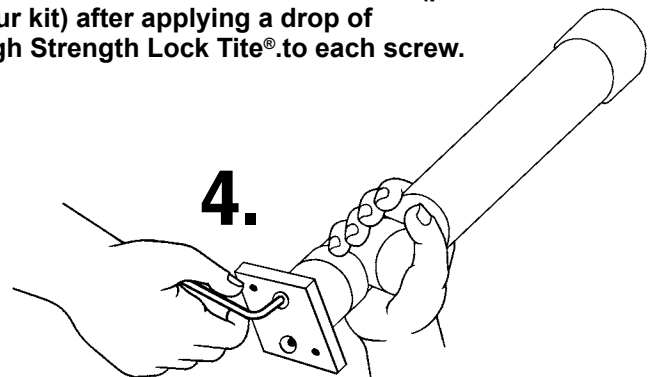
1. Using a 5/32 in. Allen Wrench, remove the two 1/4-20 x 3/4 in. Flat Head Screws and the existing Base Plate. Both the Base Plate and Screws are not to be reused.



2. Using a 3/16 in. Allen Wrench, install the Multi-Axis II Base Upper Half (Detail # 1) using the two 1/4-20 x 3/4 in. Socket Head Screws (provided in your kit) after applying a drop of High Strength Lock Tite® to each screw.



3. After applying a drop of High Strength Lock Tite® to the 1/2 x 3/8-16 x 1 in. Shoulder Bolt (Detail # 6), insert it through the Spring (Detail # 5) and Multi-Axis II Base Lower Half (Detail # 3). Then thread it into the Upper Base Half (Detail # 1) until it is secure with the Locating Pins in the Locating Holes.



4. Apply a drop of High Strength Lock Tite® to each of the two 1/4-20 x 3/4 in. New Flat Head Screws (Detail # 8) that are included with your kit. Use a 5/32 in. Allen Wrench to secure the New Base Plate (Detail # 7) to the Multi-Axis II Base Lower Half. You are now ready to install your New Multi-Axis II Rod Holder on your boat.